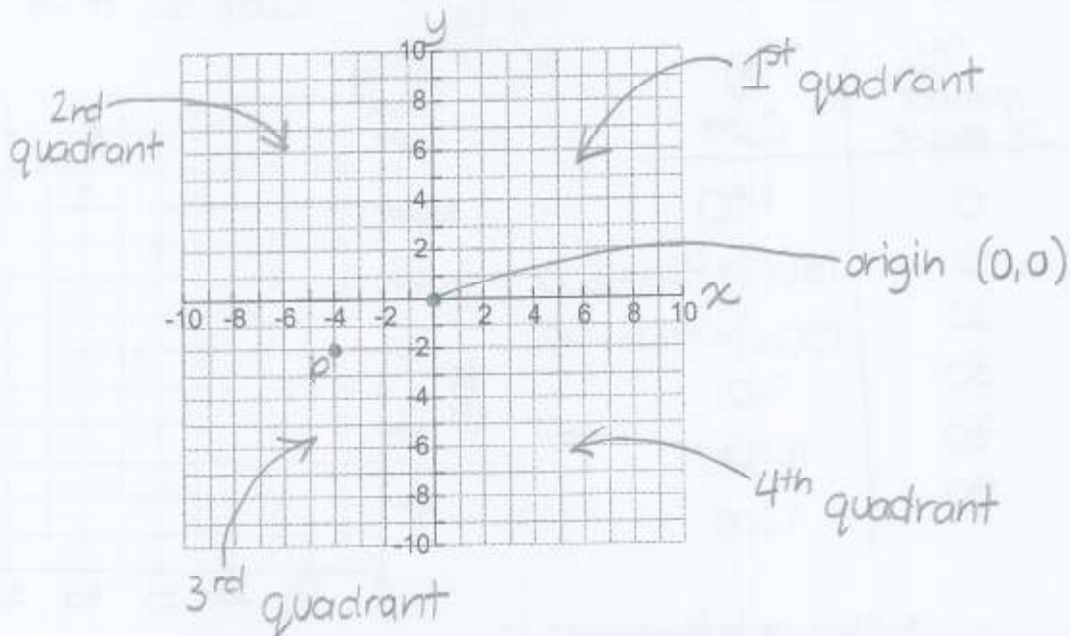


LESSON 4: CARTESIAN PLANE AND TABLE OF VALUES

1) The Cartesian Plane



(x, y)
x co-ordinate
y co-ordinate

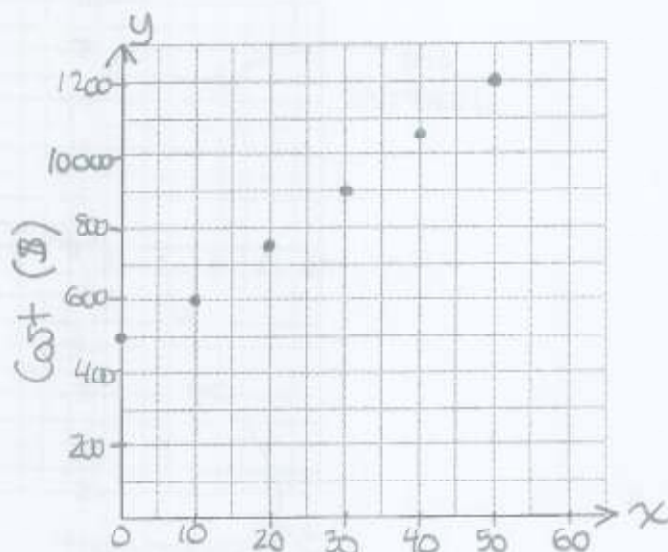
Ex. $P \rightarrow (-4, -2)$

2) Table of Values

Example 1: The cost of a banquet at Juan's Banquet Hall is \$450 for the room rental, plus \$15 for each person served. Create a table of values and draw a graph. Is the relationship linear?

Cost vs. # of People

x number of people	y Cost
0	450
10	$15(10) + 450 = 600$
20	$15(20) + 450 = 750$
30	900
40	1050
50	1200



∴ The relationship is linear.

of People

Example 2: Graph the relationship defined by $y = 2x - 1$.

x	y
-8	$2(-8) - 1 = -17 \leftarrow (-8, -17)$
-6	$2(-6) - 1 = -13$
-4	$2(-4) - 1 = -9$
-2	-5
0	-1
2	3
4	7
6	11
8	15

